



# S-250 ( )/G



## Standard, High-Strength, Mobility for Communications and Electronic Equipment

The S-250 ( )/G shelter makes it possible to transport and operate a wide variety of communications and electronic equipment to the field as a mobile unit.

This high-strength, insulated, all-weather, general-purpose mobile unit is designed to meet the user's specifications for complete systems integration.

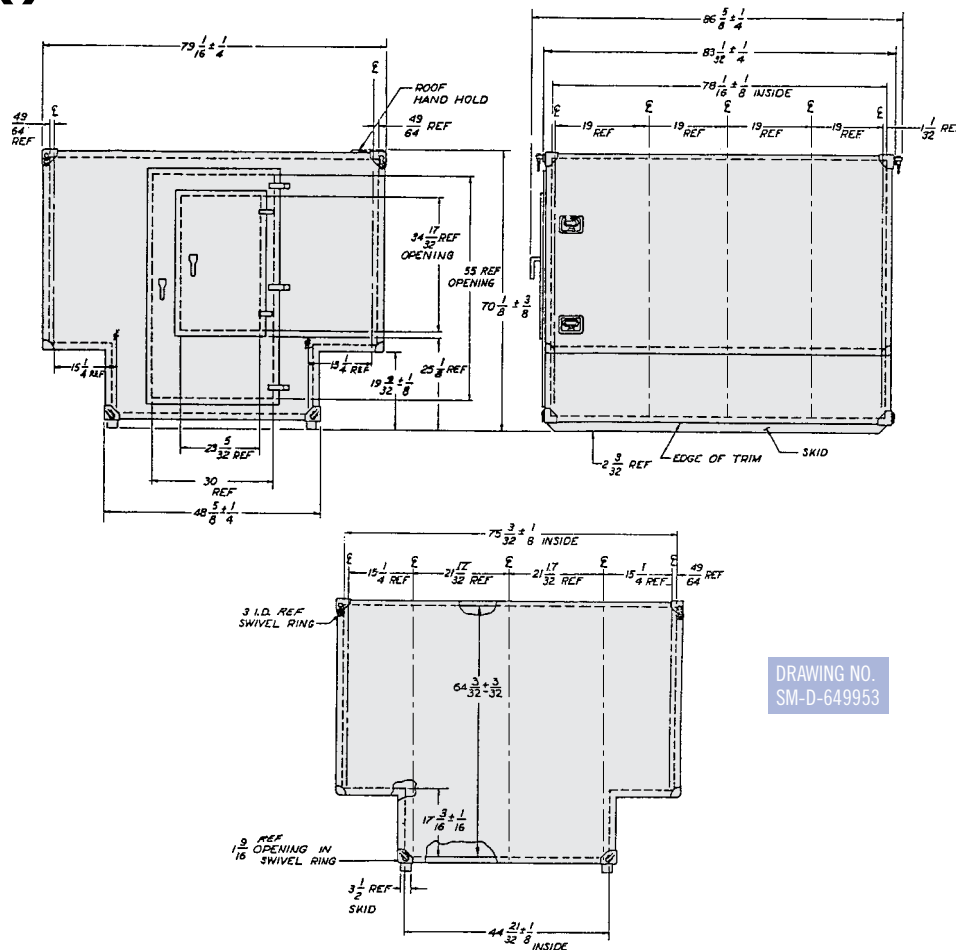
The S-250 shelter is of foam and beam bonded sandwich construction consisting of a polyurethane foam core, aluminum skins and a framework of high strength aluminum alloy extrusions. Foam and beam panel construction provides high strength to weight ratios and facilitates ease of modification, repair, and maintenance.

The mobile shelter system is transportable by 1 1/4-ton military truck (M705, M715, and XM561), 1 1/4-ton Type E Commercial Utility Cargo Vehicle (CUCV), 1 1/4-ton High Mobility Multipurpose Wheeled Vehicle (HMMWV), military cargo aircraft such as the C-130, helicopter, and by sea or rail.



**A TRADITION OF QUALITY**

# S-250 ( )/G



DRAWING NO.  
SM-D-649953

## Performance Specifications:

**Specification ASTM E 1974 (MIL-S-55541)**

### Weight:

W/ EMI kit 762 lbs. min. - 802 lbs. max.  
W/out EMI kit 750 lbs. min. - 790 lbs. max.

**Payload:** 2,530 lbs.

**Roof Load:** Snow & ice 40 lbs./sq. ft. Personnel and equipment 660 lbs. over a 2 sq. ft. area.

**Floor Load:** 1,000 lbs. over 3 sq. ft. area without permanent deformation.

**Member Loading:** Wall, roof, and floor tensile load 1,000 lbs. followed by 75 inch-pounds torque load 5/16" - 18 inserts.

### Temperature Extremes:

Operating: -65°F to +125°F plus solar load.  
Non-Operating: -80°F to +160°F.

**Heat Transfer:** U-factor -0.50 BTU/hr./sq. ft./ °F.  
Designed to meet requirements of MIL-S-55541.

**RFI Shielding:** With addition of RFI modification kit, attenuation of 60 dB minimum over 150 KHz to 10 GHz for electric and magnetic fields and plane waves measure IAW MIL-STD-285.

## Features:

- Skids: Two (2) full length replaceable shock absorbing type
- Roof Access Steps: Two (2) recessed folding steps in sidewall and one roof handhold
- Lift/Tie Down Slings

## Options:

- RFI Modification Kit

**Watertightness:** Tested to 30 inch fording depth and to simulated rainfall.

**Lifting Eyes:** Four (4) eyes with 3 in. inside clearance. 5,000 lbs. tensile load per corner in any direction.

**Towing Eyes:** Four (4) eyes with 1.50 in. inside clearance. 5,000 lbs. tensile load per corner in any direction.



Dallastown, Pennsylvania USA  
PH: 877 520 1773  
FX: 717 246 5496  
solutions@gichnerss.com  
www.gichner.us