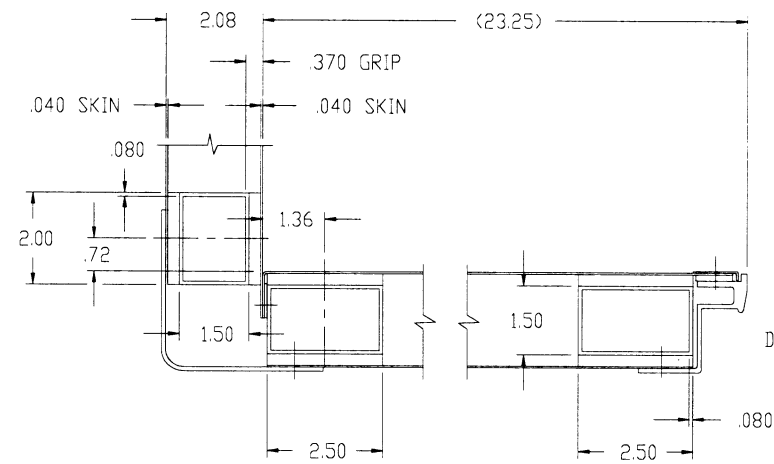
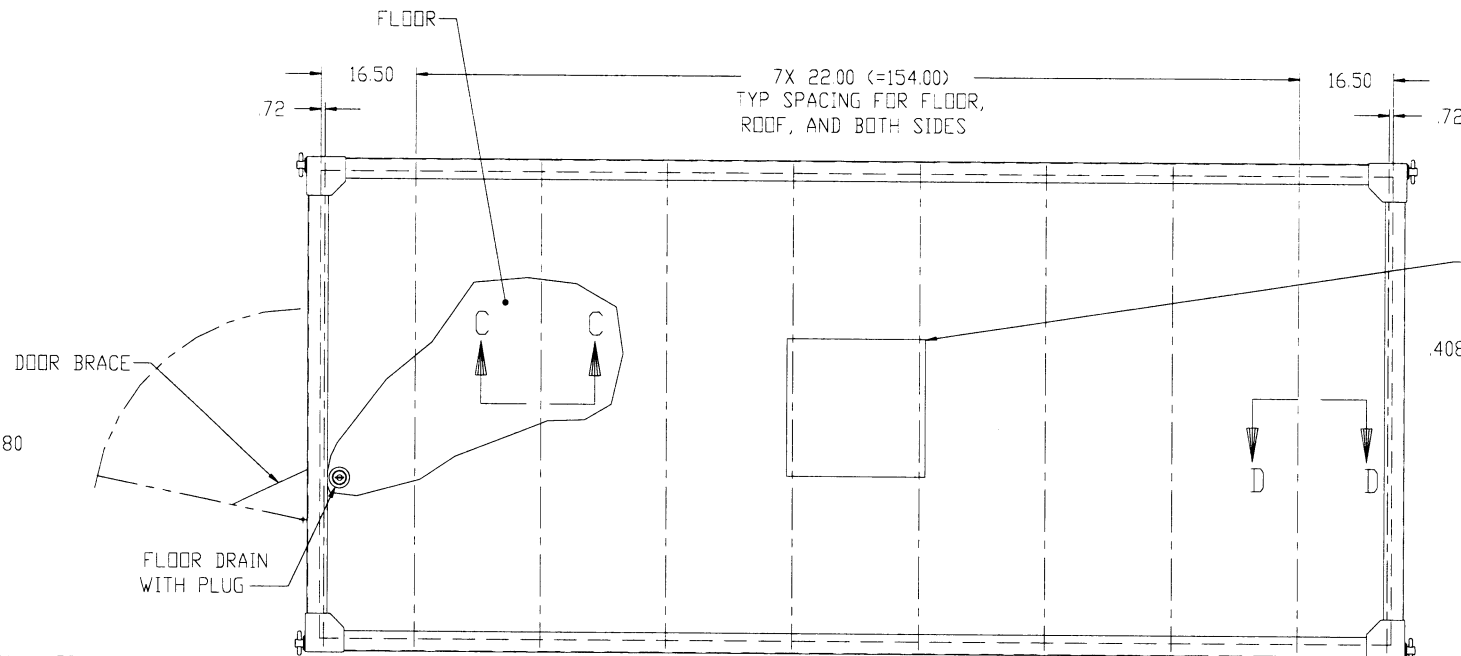


REV		DESCRIPTION	DATE	APPROVED
A	ECN 99A14	BEC	99-01-12	HZ
B	ECN 030295	DJN	03-04-25	MDW
C	ECN 050279	MEM	05-08-11	MDW

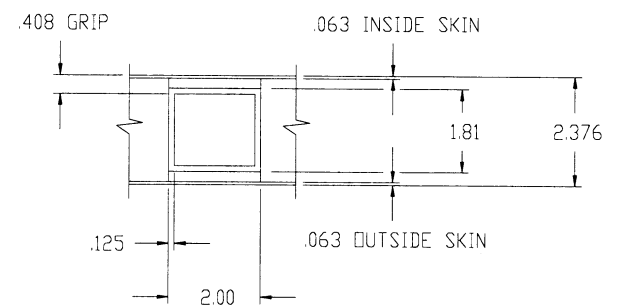
CAD MAINTAINED. CHANGES SHALL BE INCORPORATED BY THE DESIGN ACTIVITY.



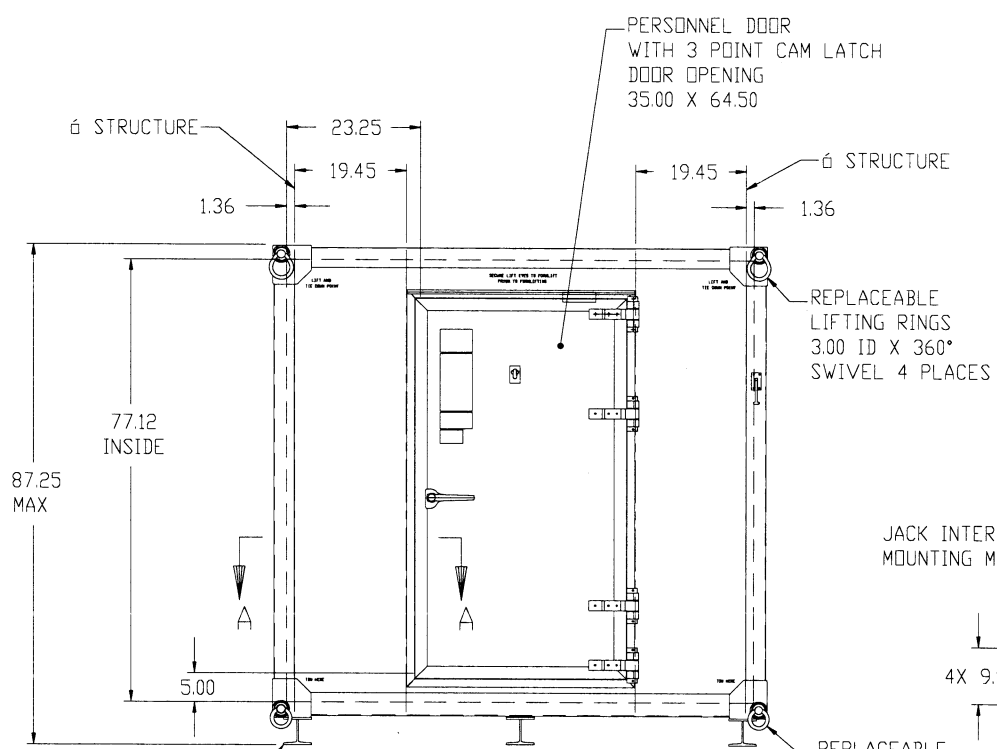
SECTION A-A
SCALE 1/2



SLING DROP PLATE



SECTION C-C
SCALE 1/2
FLOOR ONLY



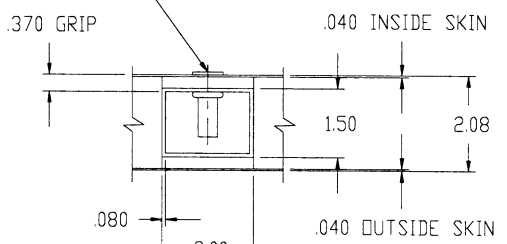
87.25 MAX

(3) REPLACEABLE RIGID I-BEAM SKIDS

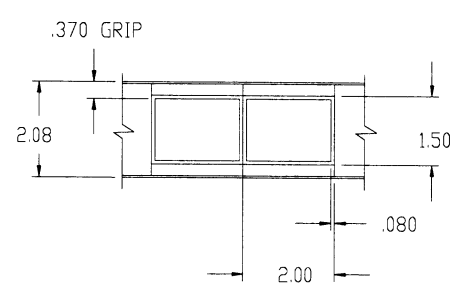
WOOD BARRIER .125 THICK

RIVNUT S31B425 B.F. GOODRICH CO. (NOT PART OF SHELTER)

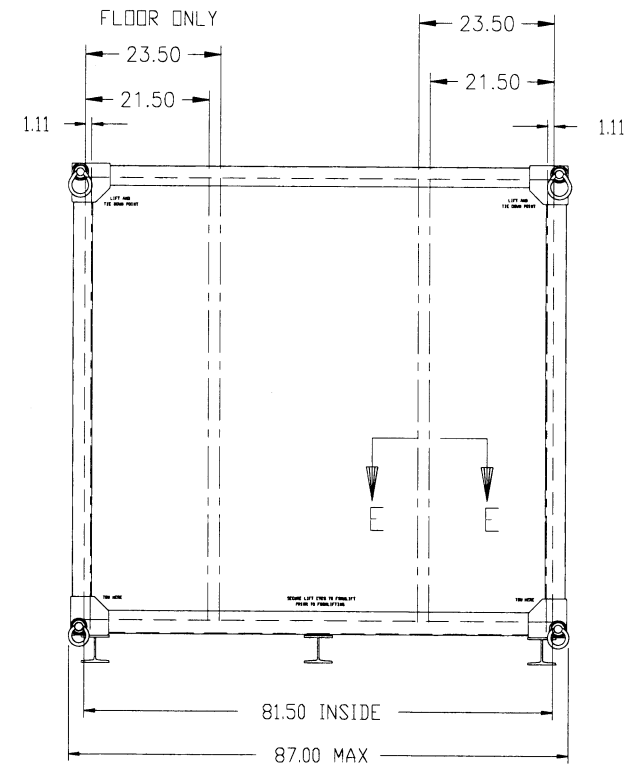
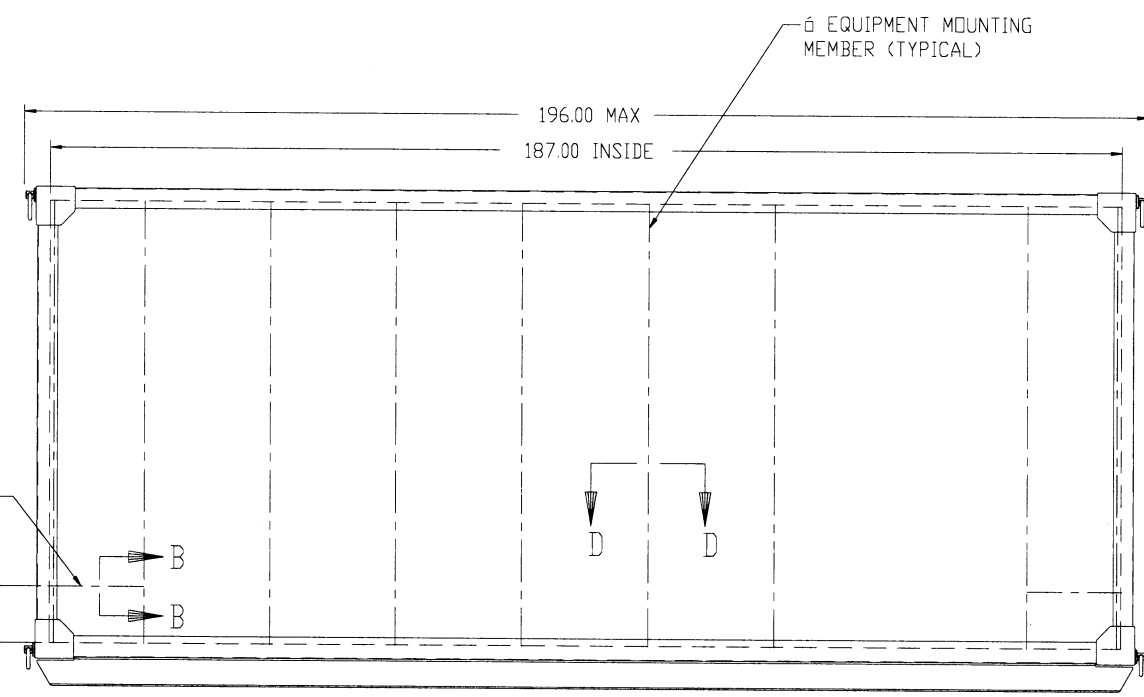
REPLACEABLE TOWING RINGS 2.50 ID X 360° SWIVEL 4 PLACES



SECTION D-D
SCALE 1/2
TYPICAL INSERT INSTALLATION



SECTION E-E
SCALE 1/2



REV STATUS OF SHEETS	REVISION	C	1	2	3	4	5	6	7	8	9	10	11	12	13	14	15	16	17	18	19	20	21	22	23	24	25	26	27
		UNLESS OTHERWISE SPECIFIED		CONTRACT NO.		Gichner Shelter Systems		East Locust Street		Dallastown, PA 17313																			
		DIMENSIONS ARE IN INCHES.		APPROVALS		DATE																							
		TOLERANCES ON:		PREPARED WD		98-12-15																							
		2 PL DECIMALS ±		CHECKED WD		98-12-15																							
		3 PL DECIMALS ±		ENGINEER HZ		98-12-15																							
		ANGLES ±		THIRD ANGLE PROJECTION		SIZE		CAGE CODE		DRAWING NO																			
				DO NOT SCALE DRAWING COPY		D		29381		7032208																			
						SCALE 1/16																							