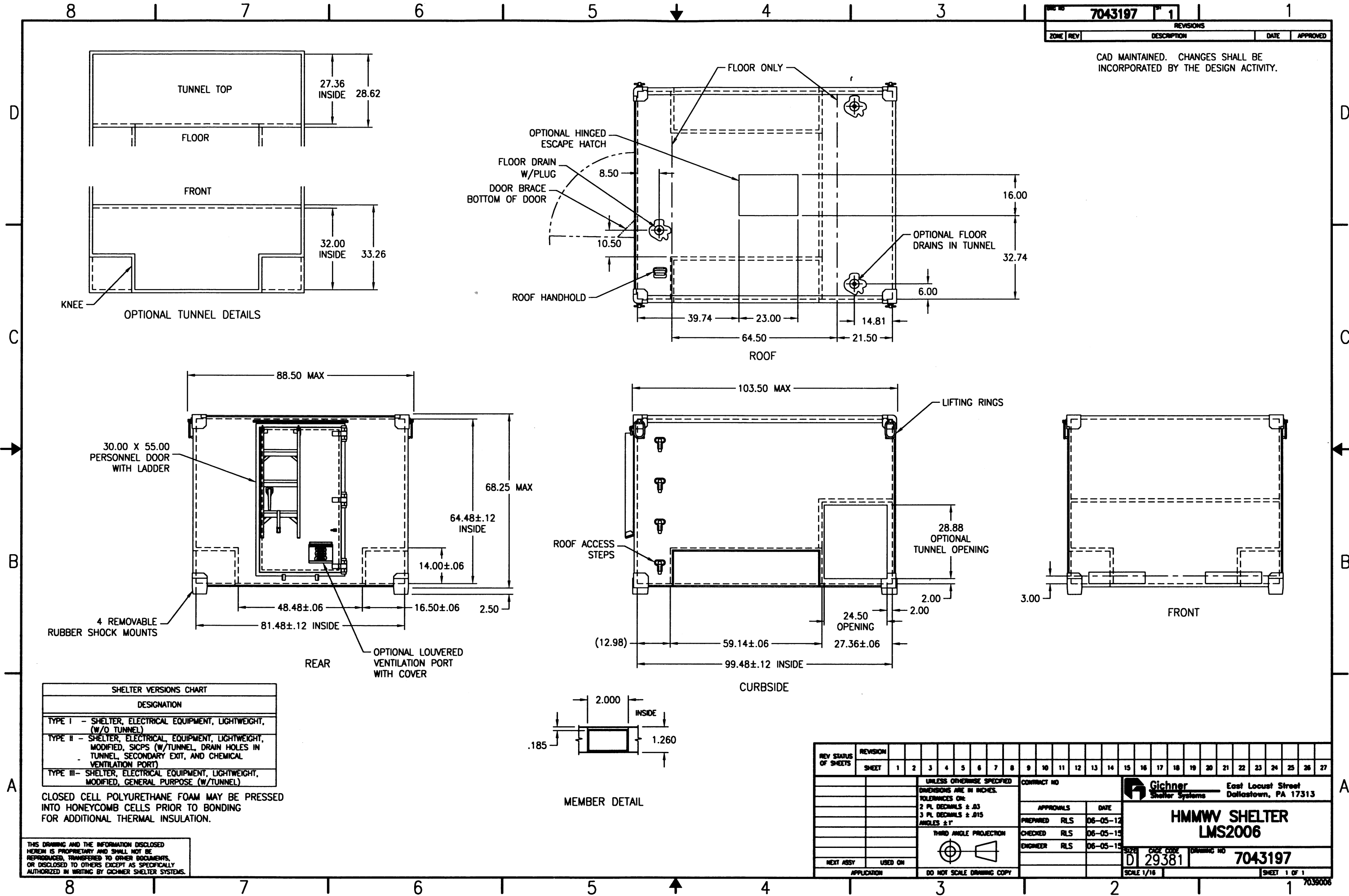


CAD MAINTAINED. CHANGES SHALL BE INCORPORATED BY THE DESIGN ACTIVITY.



SHELTER VERSIONS CHART	
DESIGNATION	
TYPE I	- SHELTER, ELECTRICAL EQUIPMENT, LIGHTWEIGHT, (W/O TUNNEL)
TYPE II	- SHELTER, ELECTRICAL EQUIPMENT, LIGHTWEIGHT, MODIFIED, SICPS (W/TUNNEL, DRAIN HOLES IN TUNNEL, SECONDARY EXIT, AND CHEMICAL VENTILATION PORT)
TYPE III	- SHELTER, ELECTRICAL EQUIPMENT, LIGHTWEIGHT, MODIFIED, GENERAL PURPOSE (W/TUNNEL)

CLOSED CELL POLYURETHANE FOAM MAY BE PRESSED INTO HONEYCOMB CELLS PRIOR TO BONDING FOR ADDITIONAL THERMAL INSULATION.

THIS DRAWING AND THE INFORMATION DISCLOSED HEREIN IS PROPRIETARY AND SHALL NOT BE REPRODUCED, TRANSFERRED TO OTHER DOCUMENTS, OR DISCLOSED TO OTHERS EXCEPT AS SPECIFICALLY AUTHORIZED IN WRITING BY GICHNER SHELTER SYSTEMS.

REV STATUS OF SHEETS	REVISION	SHEET	1	2	3	4	5	6	7	8	9	10	11	12	13	14	15	16	17	18	19	20	21	22	23	24	25	26	27
		UNLESS OTHERWISE SPECIFIED		DIMENSIONS ARE IN INCHES.		TOLERANCES OR:		2 PL DECIMALS ± .03		3 PL DECIMALS ± .015		ANGLES ± 1°		THIRD ANGLE PROJECTION		CONTRACT NO.		Gichner East Locust Street Shelter Systems Dallastown, PA 17313		APPROVALS		DATE		PREPARED RLS 06-05-12		CHECKED RLS 06-05-15		ENGINEER RLS 06-05-15	
		NEXT ASSY		USED ON		APPLICATION		DO NOT SCALE DRAWING COPY		SCALE 1/16		DRAWING NO. 7043197		SHEET 1 OF 1		7039006													